

# cpuprocanalyzer

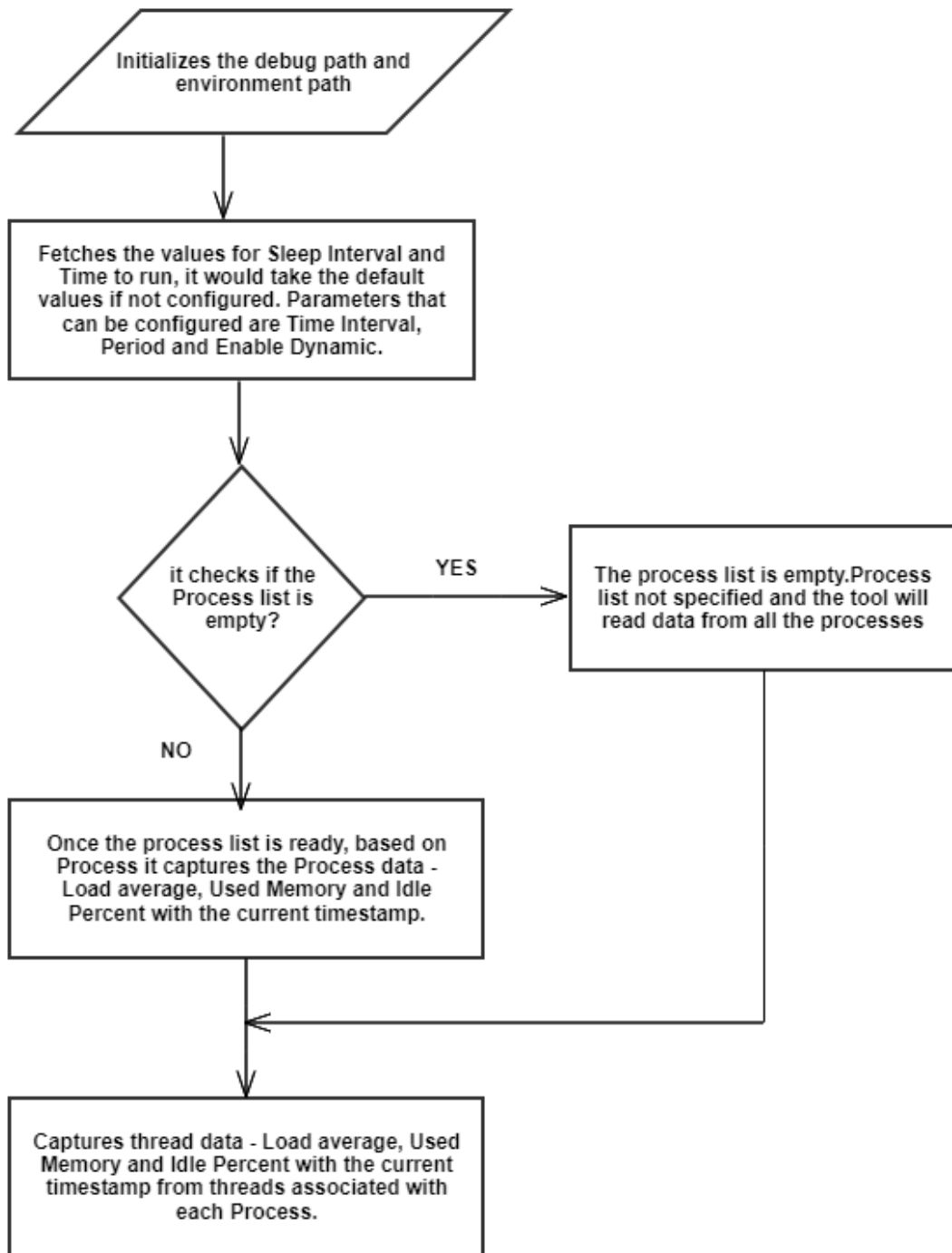
- [Introduction](#)
- [Code Flow](#)
- [How to Launch](#)

## Introduction

- RDK PROC ANALYZER is a tool that enables different teams like development, triage and testing to analyze the CPU and memory utilization of the processes that run on top of RDK framework.
- It helps us in detecting the memory leaks, cpu and memory performance regressions.
- This tool is implemented as a service.
- Highly configurable (Parameters like period , time interval and processes to be monitored can be configured).

## Code Flow

- The main code flow of CPU Procanalyzer -



- To get the Load Average information-

**/proc/loadavg**  
to get the Load Averages over  
the past 1, 5 and 15 minutes.

- To get the Memory information-

**/proc/meminfo**  
to get the Memory information :  
Total Memory and Free Memory



**Used Memory =**  
**Total Memory - Free Memory.**

- To get the Idle Percent Information-

**/proc/stat**  
to get the Idle Percent  
information.

## How to Launch

This tool runs as a service.

If the file /tmp/PROC\_ANALYZER\_ENABLE is touched the tool starts running and it logs the details.

### How to Configure:

1 Open '/opt/rmfconfig.ini' file on the device.

Parameters that can be configured:

**(a)Time Interval**

**(b)Period**

**(c)Enable Dynamic**

(a) Time Interval : It is the amount of time the tool runs.

(b) Period : It is the interval of time for which the tool records the information.

(c)Enable Dynamic : This is a flag to disable and enable the capturing of dynamic processes  
( Enable Dynamic = 1 means enable and Enable Dynamic =0 means disable ).

It would take the default values if not configured (sleepsecs:60, Time to run:0, Dynamic:1)

```
Ex: FEATURE.CPUPROCANALYZER. SLEEP.SECONDS=60
```

```
FEATURE.CPUPROCANALYZER.TIMETORUN.SECONDS = 0 (which means tool runs until it is killed manually)
```

```
FEATURE.CPUPROCANALYZER.DYNAMIC = 1
```

2. Open '/opt/processes.list' file on the device.

File to configure process names to be monitored